

Rail Ridge Map October 15, 2024

Fire acres: 175,060 | Total Personnel: 609 | Percent Containment: 89%

Air resources included four Type 1 helicopters, three air tankers, and an air attack. These resources were utilized to protect the values at risk north of Cougar Ridge where an increase of fire activity was observed by dropping water buckets and retardant.

Cloud coverage over the area shaded the fire until about noon, causing temperatures to increase, humidity to drop, and overall fire activity to increase in the northwest, causing an increase of 900 acres to the fire.

Crews continued to patrol the contained perimeter of the fire to locate hot spots, remove debris, and take down hazard trees

There is currently a 70% chance of wetting rain this evening after midnight. Higher elevations may experience snowfall.

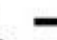



Public Info

October 15, 2024

Rail Ridge Fire

OR-PRD-000761

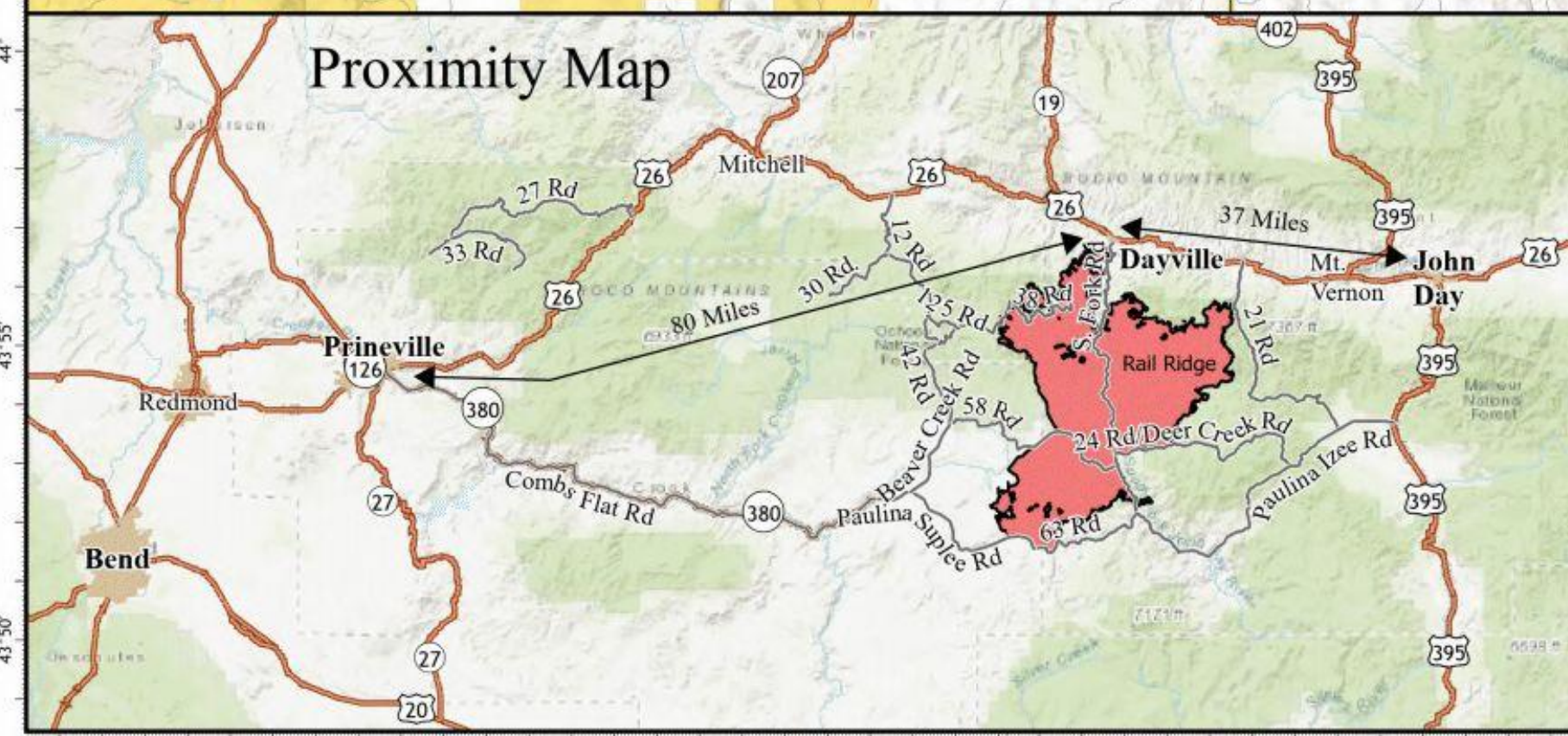
175,060 Acres on 10/13 @ 1914 PDT

-  Closure
- Perimeter Line
 -  Contained
 -  Uncontained
- Closure Areas
 -  BLM Closure
 -  Malheur NF Closure
 -  Ochoco NF Closure
 -  Open Roads Along the Closure



Forest & BLM Closures, Evacuation Information and Fire Restrictions for the Rail Ridge Fire area can be found at:
<https://linktr.ee/RailRidgeFire>.

Proximity Map



NWCIMT8 will be transitioning with NWCIMT2 this evening at 8pm. Team 8 has appreciated the support of the local landowners, community and agency administrators during their two week assignment on the Rail Ridge Fire.

